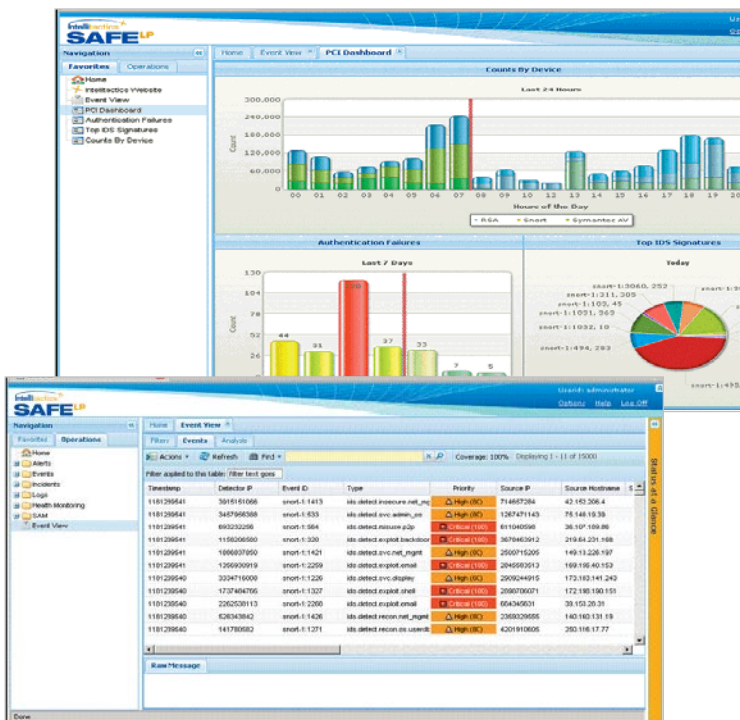


Credit Unions Benefit from SAFE LP

Intellitactics SAFE LP appliances are right sized so that every credit union has an affordable alternative for logging and security event management. Federal credit unions and most state chartered credit unions are required to implement key controls related to their security programs. The programs are meant to manage and control risk related to ensuring the security and confidentiality of member records and information. SAFE LP is a fully capable security information and event management (SIEM) solution that is simple to deploy and easy to use.

SAFE LP appliances have the ability to monitor control violations in real time. Automated continuous monitoring of the computing infrastructure is the best way to mitigate risk and protect against cyber threats or malicious insiders. SAFE appliances feature packaged analytics to ensure the data required to regularly audit the security program and to correlate, notify and report on violations is collected, parsed, normalized and persisted.



Implementing a SAFE LP appliance is essential to security program consistency. SAFE LP is invaluable in assessing whether the policies and procedures in place are sufficient to control risk. SAFE LP's automated event monitoring has been proven to detect and prevent intrusions and attacks.

Security Mission of Credit Unions

The National Credit Union Administration (NCUA) is the independent federal agency that charters and supervises federal credit unions throughout the United States and its territories. The National Credit Union Share Insurance Fund (NCUSIF) is a federal fund backed by the credit and "good faith" of the United States government. This fund protects over 80 million account holders in federal and most state-chartered credit unions across the country.

The NCUA requires that each credit union "manage and control risk" based on the realities of the business (size, complexity, etc.), and recommend security measures that are appropriate to their environment. Each federally insured credit union is required to have a written member information security program commensurate with the level of risk related to its business. Credit unions should be able to:

From the Configurable SAFE LP dashboard, you simply point and click to begin an investigation or run a comprehensive report on any monitored device. The advantage of events over logs is the speed of doing inquiries, and investigations and running reports. Log detail remains available while events bubble up useful information faster.

1. Identifying reasonably foreseeable internal and external threats that could result in unauthorized disclosure, misuse or destruction of member or member information systems
2. Determine the likelihood and potential damage of such threats, based on the sensitivity of member information
3. Assess whether the policies, procedures and information systems in place are sufficient to control these risks

